

DIAMOND 10 SERIES				
MODEL	SPECIFICATIONS			RRP (Inc GST)
Diamond 10.7 	Bass Driver Bass / Mid Driver Midrange Driver Tweeter Recommended Amplifier Nominal Impedance Sensitivity (1W @ 1M) Frquency Range Crossover Frequency Dimensions (H x W x D) Height on Feet / Spikes Colours / Finishes	2 x 6.5" (165mm) - 2" (50mm) Dome 1" (25mm) 30 - 200W 6Ω 90dB 30 - 24K 150Hz / 850Hz / 4.5kHz 965 x 225 x 303mm 1020mm Black, Cherry, Rosewood, Walnut, Wenge, Winter Maple & Cool Maple		\$1,549.00
Diamond 10.6 	Bass Driver Bass / Mid Driver Midrange Driver Tweeter Recommended Amplifier Nominal Impedance Sensitivity (1W @ 1M) Frquency Range Crossover Frequency Dimensions (H x W x D) Height on Feet / Spikes Colours / Finishes	6.5" (165mm) 6.5" (165mm) - 1" (25mm) 20 - 150W 6Ω 88dB 35 - 24K 100Hz / 2.5kHz 900 x 225 x 303mm 955mm Black, Cherry, Rosewood, Walnut, Wenge, Winter Maple & Cool Maple		\$1,249.00
Diamond 10.5 	Bass Driver Bass / Mid Driver Midrange Driver Tweeter Recommended Amplifier Nominal Impedance Sensitivity (1W @ 1M) Frquency Range Crossover Frequency Dimensions (H x W x D) Height on Feet / Spikes Colours / Finishes	6.5" (165mm) - 2" (50mm) Dome 1" (25mm) 20 - 120W 6Ω 86dB 35 - 24kHz 600Hz / 3.8kHz 850 x 225 x 303mm 905mm Black, Cherry, Rosewood, Walnut, Wenge, Winter Maple & Cool Maple		\$1,149.00

DIAMOND 10 SERIES continued				
MODEL	SPECIFICATIONS			RRP (Inc GST)
Diamond 10.4 	Bass Driver Bass / Mid Driver Midrange Driver Tweeter Recommended Amplifier Nominal Impedance Sensitivity (1W @ 1M) Frquency Range Crossover Frequency Dimensions (H x W x D) Height on Feet / Spikes Colours / Finishes	5" (125mm) 5" (125mm) - 1" (25mm) 20 - 120W 6Ω 88dB 38 - 24kHz 140Hz / 3.8k 850 x 190 x 283mm 905mm Black, Cherry, Rosewood, Walnut, Wenge, Winter Maple & Cool Maple		\$999.00
Diamond 10.2 	Bass Driver Bass / Mid Driver Midrange Driver Tweeter Recommended Amplifier Nominal Impedance Sensitivity (1W @ 1M) Frquency Range Crossover Frequency Dimensions (H x W x D) Height on Feet / Spikes Colours / Finishes	- 6.5" (165mm) - 1" (25mm) 20 - 100W 6Ω 86dB 40 - 24kHz 1.8kHz 364 x 225 x 303mm - Black, Cherry, Rosewood, Walnut, Wenge, Winter Maple & Cool Maple		\$599.00
Diamond 10.1 	Bass Driver Bass / Mid Driver Midrange Driver Tweeter Recommended Amplifier Nominal Impedance Sensitivity (1W @ 1M) Frquency Range Crossover Frequency Dimensions (H x W x D) Height on Feet / Spikes Colours / Finishes	- 5" (125mm) - 1" (25mm) 20 - 100W 6Ω 86dB 48 - 24kHz 1.8kHz 296 x 190 x 283mm - Black, Cherry, Rosewood, Walnut, Wenge, Winter Maple & Cool Maple		\$449.00

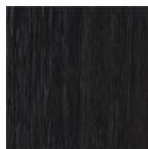
DIAMOND 10 SERIES continued				
MODEL	SPECIFICATIONS			RRP (Inc GST)
Diamond 10.0 	Bass Driver Bass / Mid Driver Midrange Driver Tweeter Recommended Amplifier Nominal Impedance Sensitivity (1W @ 1M) Frquency Range Crossover Frequency Dimensions (H x W x D) Height on Feet / Spikes Colours / Finishes	- 4" (100mm) - 1" (25mm) 15 - 75W 6Ω 86dB 55 - 24kHz 2.5kHz 236 x 145 x 168mm - Black, Cherry, Rosewood, Walnut, Wenge, Winter Maple & Cool Maple		\$349.00
Diamond 10.DFS 	Bass Driver Bass / Mid Driver Midrange Driver Tweeter Recommended Amplifier Nominal Impedance Sensitivity (1W @ 1M) Frquency Range Crossover Frequency Dimensions (H x W x D) Height on Feet / Spikes Colours / Finishes	- 2 x 4" (100mm) - 2 x 1" (25mm) 15 - 120W 6Ω 86dB 70 - 24kHz 3.5kHz 280 x 290 x 132mm - Black, Cherry, Rosewood, Walnut, Wenge, Winter Maple & Cool Maple		\$399.00
Diamond 10.SR 	Bass Driver Bass / Mid Driver Midrange Driver Tweeter Recommended Amplifier Nominal Impedance Sensitivity (1W @ 1M) Frquency Range Crossover Frequency Dimensions (H x W x D) Height on Feet / Spikes Colours / Finishes	- 4" (100mm) - 1" (25mm) 10 - 60W 6Ω 88dB 70 - 24kHz 2.2kHz 236 x 185 x 117mm - Black, Cherry, Rosewood, Walnut, Wenge, Winter Maple & Cool Maple		\$299.00

DIAMOND 10 SERIES continued					
MODEL	SPECIFICATIONS				RRP (Inc GST)
Diamond 10.CM 	Bass Driver Bass / Mid Driver Midrange Driver Tweeter Recommended Amplifier Nominal Impedance Sensitivity (1W @ 1M) Frequency Range Crossover Frequency Dimensions (H x W x D) Height on Feet / Spikes Colours / Finishes	2 x 6.5" (165mm) - 2" (50mm) Dome 1" (25mm) 30 - 200W 6Ω 90dB 55 - 24kHz 1/6kHz 225 x 535 x 303mm 231mm Black, Cherry, Rosewood, Walnut, Wenge, Winter Maple & Cool Maple			\$579.00
Diamond 10.CS 	Bass Driver Bass / Mid Driver Midrange Driver Tweeter Recommended Amplifier Nominal Impedance Sensitivity (1W @ 1M) Frequency Range Crossover Frequency Dimensions (H x W x D) Height on Feet / Spikes Colours / Finishes	- 2 x 5" (125mm) - 1" (25mm) 20 - 150W 6Ω 89dB 70 - 24kHz 2.8kHz 190 x 420 x 283mm 197mm Black, Cherry, Rosewood, Walnut, Wenge, Winter Maple & Cool Maple			\$449.00
Diamond 10.CC 	Bass Driver Bass / Mid Driver Midrange Driver Tweeter Recommended Amplifier Nominal Impedance Sensitivity (1W @ 1M) Frequency Range Crossover Frequency Dimensions (H x W x D) Height on Feet / Spikes Colours / Finishes	- 2 x 4" (100mm) - 1" (25mm) 15 - 120W 6Ω 88dB 75 - 24kHz 2.5kHz 120 x 340 x 133mm 128mm Black, Cherry, Rosewood, Walnut, Wenge, Winter Maple & Cool Maple			\$339.00

DIAMOND 10 SERIES continued					
MODEL	SPECIFICATIONS				RRP (Inc GST)
Diamond 10.GX-SUB 	Bass Driver USB 5V Output Amplifier Power Line Input Sensitivity Avg. Max Output @ 1m Boundary Response Crossover Range Dimensions (H x W x D) Height on Feet / Spikes Colours / Finishes	1 x 10" (250mm) No 250W 325mv for 150W 113dB 30 - 100Hz 35 - 85Hz (6x10db steps) 420 x 420 x 375mm 478mm Black, Cherry, Rosewood, Walnut, Wenge, Winter Maple & Cool Maple			\$1,049.00
Diamond 10.MX-SUB 	Bass Driver USB 5V Output Amplifier Power Line Input Sensitivity Avg. Max Output @ 1m Boundary Response Crossover Range Dimensions (H x W x D) Height on Feet / Spikes Colours / Finishes	1 x 10" (250mm) Yes 150W 200mv for 75W 110dB 35 - 110Hz 35 - 85Hz (6x10db steps) 330 x 330 x 370mm 360mm Black, Cherry, Rosewood, Walnut, Wenge, Winter Maple & Cool Maple			\$799.00
Diamond 10.SX-SUB 	Bass Driver USB 5V Output Amplifier Power Line Input Sensitivity Avg. Max Output @ 1m Boundary Response Crossover Range Dimensions (H x W x D) Height on Feet / Spikes Colours / Finishes	1 x 8" (200mm) No 100W 200mv for 75W 107dB 40 - 110Hz 35 - 85Hz (6x10db steps) 290 x 290 x 320mm 333mm Black, Cherry, Rosewood, Walnut, Wenge, Winter Maple & Cool Maple			\$599.00

DIAMOND 10 SERIES continued					
MODEL	SPECIFICATIONS				RRP (Inc GST)
Diamond 10.HCP 	Front Speakers Rear Speakers Center Speaker Subwoofer Colours / Finishes	1 pair x Diamond 10.0 1 pair x Diamond 10.0 Diamond 10.CC Diamond 10.MX Black, Cherry, Rosewood, Walnut, Wenge, Winter Maple & Cool Maple			\$1,599.00

NOTE : Walnut, Wenge, Winter Maple and Cool Maple may not be available at all times, but will be available within 8 - 10 weeks from order date. Please confirm stock availability with our office at all times.



Black



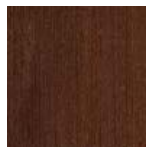
Cherry



Rosewood



Walnut



Wenge



Winter Maple



Cool Maple